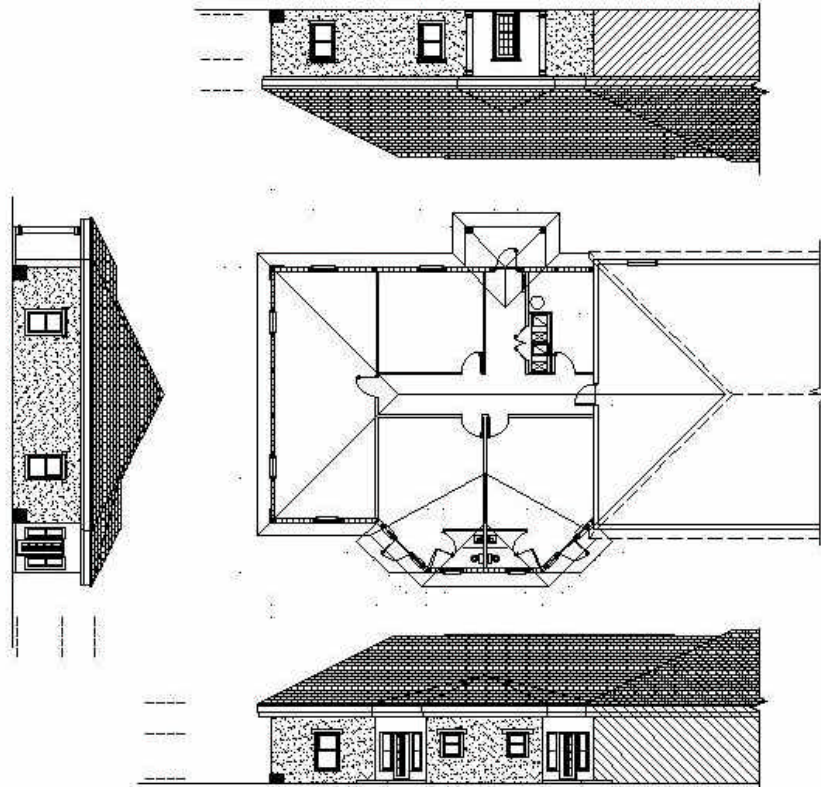


UUUS Building Extension



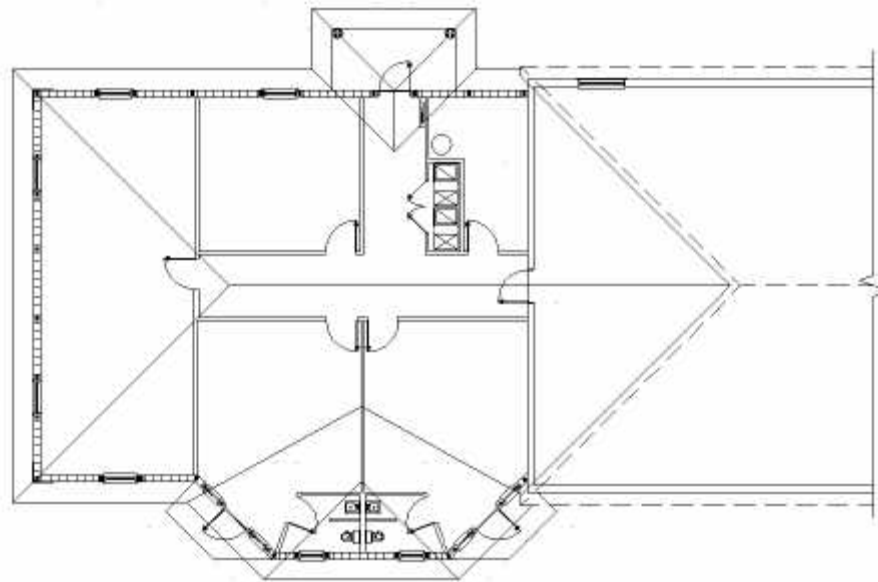
D.A.Symonds
December 15, 2007

- ❖ Background
 - In our wonderful building designed by Herb Hawthorne we have reached the point where we have a desperate shortage of meeting spaces. In addition, the youth do not have their own special area.
 - A committee was formed consisting of Barry Lundin, Gretchen Hobby, Martha Kirby, Gary Przyborski, Chris Reid, Landon Viles, Cleve Williams, and chaired by Dave Symonds. We have also had lots of help and encouragement from Rachel Christensen.
- ❖ Status
 - We have planned for the addition of classrooms. Using inputs from the society the plan is for:
 - A large room at the far end (South) of the building for the youth
 - 2 classrooms for the children for RE. These rooms will have bathrooms attached and access to the re-located playground.
 - 1 room for use as appropriate, perhaps the office.
 - 1 room for storage and the utilities/Air handler.
 - The plans are close to finalized.
 - There are few items that will require changing:
 - An exit door from the large youth room
 - Larger Windows
 - There are some things that will require defining
 - Roofing Material
 - Window types and their energy efficiency
 - Insulation
 - Lighting
 - Flooring materials
 - We have a budgetary estimate of \$301,000. We plan to work with the contractor to lower this since there is currently a shortage of work for sub-contractors.
 - We will need to find the funds. There are several suggestions being considered.
 - Donations are the preferable method since debt will not require servicing. We need only 30 generous members to contribute \$10,000 each to get there. Of course any amount you can manage will be gratefully accepted.
 - A mortgage is a possibility, but with the sub-prime crisis this will be difficult currently. We have yet to contact UU in Boston to see if they can help in any way.
 - Another suggestion is to form a limited partnership. A group of members would lend funds at a lesser interest rate than we could secure from a bank and the members could receive a competitive interest rate on their loan
 - A combination of some of the above may work.
 - If you have other suggestions please let us know.



❖

Figure 1 Overall Plan



❖

Figure 2 Classroom Aerial View

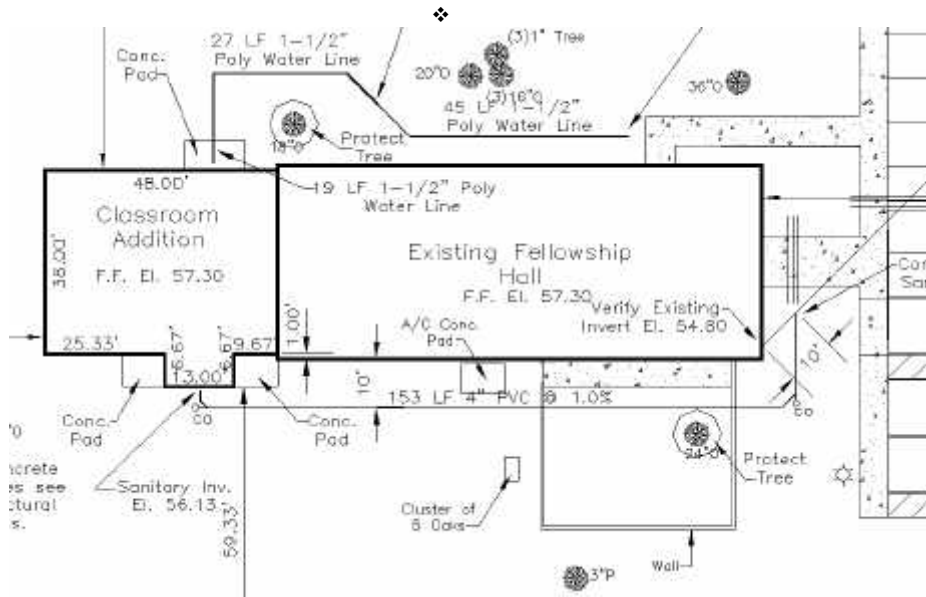


Figure 3 Site Plan around Building



Figure 4 Elevations West - South - East